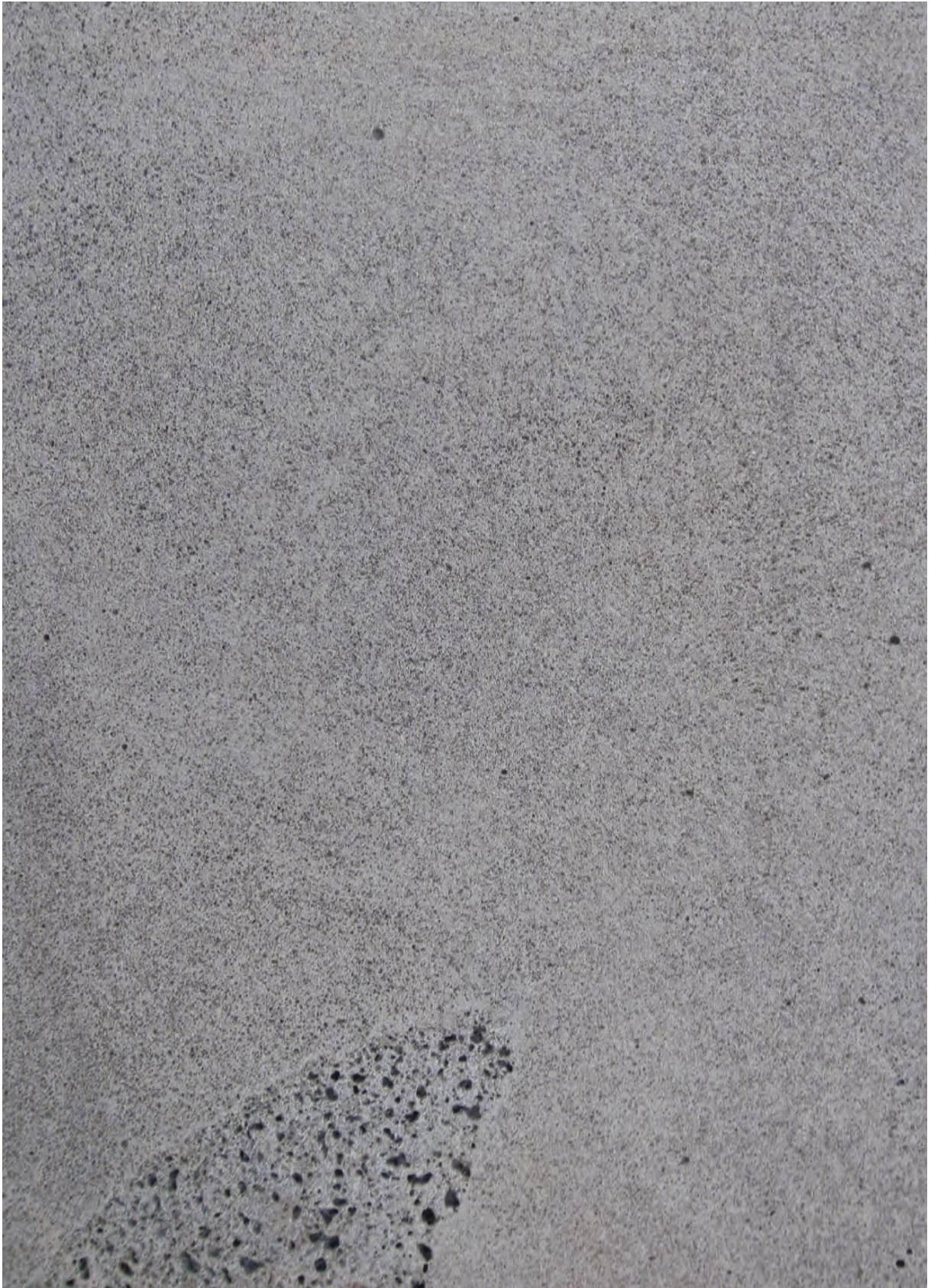
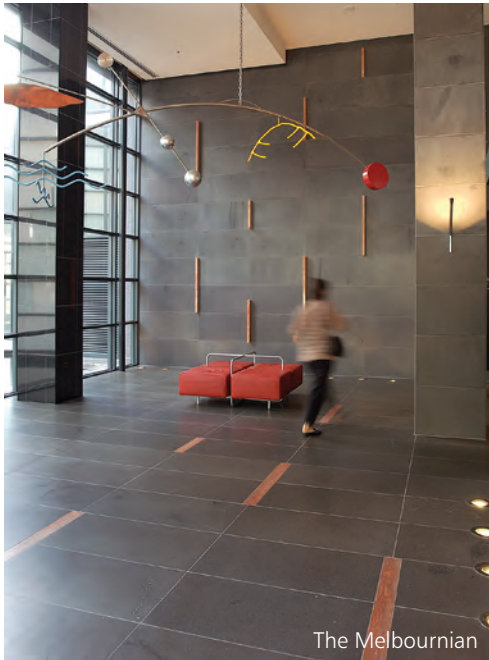


Bamstone Port Fairy Bluestone

bluestone, from BAMSTONE Bluestone





The Melbournian



DETAILS

Name:	Bamstone Port Fairy Bluestone
Substitute Names:	Basalt
Colour & Veining:	Dark grey
Stone Type:	Olivine Basalt
Quarry Location:	Port Fairy, Victoria
Availability:	Excellent

TYPICAL PHYSICAL PROPERTIES

Bulk Density:	2.61 tonnes/m ³
Compressive Strength (dry/wet):	130.8/107.7 MPa
Flexural Strength (dry/wet):	14.3/15.8 MPa
Water Absorption by weight:	1.28%
Abrasion Resistance:	31 Ha
Slip Resistance:	Diamond sawn 65, V, CSIRO R13 320 grit honed 41, X. CSIRO R10

PHYSICAL CHARACTERISTICS

Texture:	Fine grained
Inclusions:	finely vesicular, massive rock, free of defined defects
Degree of Polish:	
Variation of Tonality:	
Characteristics:	
Finishes Available:	Diamond Sawn, Honed, Polished, Gritblasted, Heritage
Forms Available:	

PETROGRAPHIC ANALYSIS

Plagioclase:	37%
Pyroxene:	23%
Olivine:	18%
Iddingsite:	1%
Opagues:	5%
Pores:	16%

Dimension Stone is a product of nature and is subject to variation in colour and texture. These images should only be considered as generally representative of the featured stone. Full size slabs are generally available to view on request.

BAMSTONE Bluestone

Factory: 204 Hamilton Road Port Fairy, Victoria 3284, Australia
Mailing: PO Box 156, Port Fairy, Victoria 3284, Australia
Phone: 03 5568 2655 **Fax:** 03 5568 2454
Email: sales@bamstone.com.au **Web:** www.bamstone.com