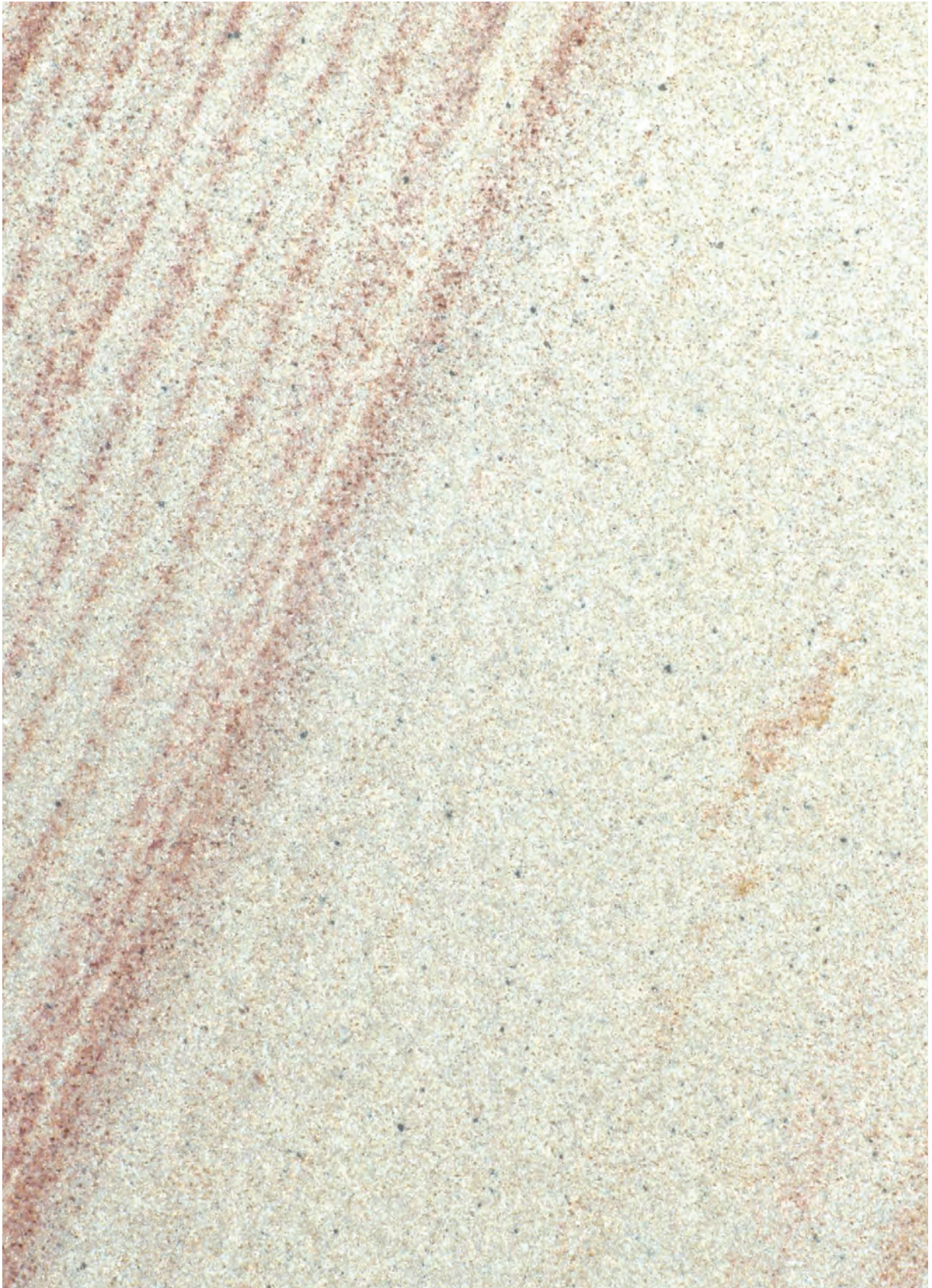
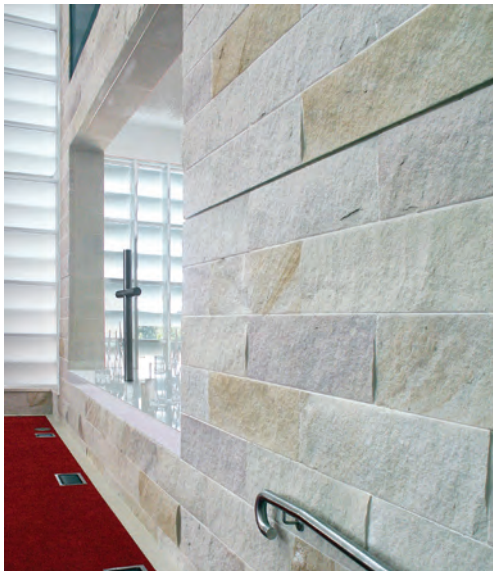


Mt White Pink

sandstone, from Gosford Quarries





Hillsong chapel, Mt White Pink and White.

DETAILS

Name:	Mt White 'Pink'
Substitute Names:	Gosford Pink, Somersby Pink
Colour & Veining:	Pink, banded
Stone Type:	Sandstone
Quarry Location:	Gosford, NSW
Availability:	Lead times required for large volume

TYPICAL PHYSICAL PROPERTIES

Bulk Density:	2.2-2.3 tonnes/m ³
Compressive Strength (dry/wet):	50-60/17-30 MPa
Modulus of Rupture (dry/wet):	7.5-9.5/2.0-3.0 MPa
Water Absorption by weight:	4.0-5.0 %
Abrasion Resistance:	
Slip Resistance:	

PHYSICAL CHARACTERISTICS

Texture:	Medium-grained quartz sandstone with argillaceous matrix. The concentration and distribution of iron oxides influence the nature of the colour banding and density of colour
Inclusions:	Sandballs and variation
Degree of Polish:	N/A
Variation of Tonality:	High
Characteristics:	Popular decorative sandstone
Finishes Available:	Split, rough sawn, diamond sawn & hand worked
Forms Available:	Block, slab and worked product

PETROGRAPHIC ANALYSIS (TYPICAL)

Quartz:	63%
Clays:	25%
Voids:	5%
Other:	7%

Dimension Stone is a product of nature and is subject to variation in colour and texture. These images should only be considered as generally representative of the featured stone. Full size slabs are generally available to view on request.

Gosford Quarries Pty Ltd

300 Johnston Street, Annandale, NSW 2038
Phone: +61 2 9810-7555 **Fax:** +61 02 9810-1669
Email: sales@gosfordquarries.com.au
Web: www.gosfordquarries.com.au